

The original of this drawing document was prepared by Soltesz, LLC. SOLTESZ, LLC makes no warranty, express or implied, concerning the accuracy of any information that has been transmitted by electronic means. SOLTESZ, LLC makes no warranty, express or implied, concerning the accuracy of any information that has been transmitted by electronic means. SOLTESZ, LLC makes no warranty, express or implied, concerning the accuracy of any information that has been transmitted by electronic means.

Tree Number	Common Name	Scientific Name	Size (inches DBH)	Critical Root Zone (feet)	Condition Rating %
538	Southern Red Oak	<i>Quercus falcata</i>	35.5	53.3	100%
539	White Oak	<i>Quercus alba</i>	30.0	45.0	81%
540	White Oak	<i>Quercus alba</i>	46.5	69.8	84%
541	Tulip Poplar	<i>Liriodendron tulipifera</i>	42.5	63.8	78%
542	Tulip Poplar	<i>Liriodendron tulipifera</i>	42.5	63.8	84%
543	Chestnut Oak	<i>Quercus prinus</i>	43.4	65.1	75%
552	Chestnut Oak	<i>Quercus prinus</i>	43.8	65.7	81%
553	White Oak	<i>Quercus alba</i>	45.0	67.5	97%
554	White Oak	<i>Quercus alba</i>	31.2	46.8	97%
555	White Oak	<i>Quercus alba</i>	30.2	45.3	75%
556	White Oak	<i>Quercus alba</i>	43.4	65.1	94%
557	White Oak	<i>Quercus alba</i>	33.0	49.5	94%
558	White Oak	<i>Quercus alba</i>	30.0	45.0	94%
559	Chestnut Oak	<i>Quercus prinus</i>	37.4	56.1	88%
560	Chestnut Oak	<i>Quercus prinus</i>	47.0	70.5	84%
598	White Oak	<i>Quercus alba</i>	31.0	46.5	94%
839	White Oak	<i>Quercus alba</i>	39.0	58.5	100%
840	White Oak	<i>Quercus alba</i>	41.0	61.5	100%
841	White Oak	<i>Quercus alba</i>	35.5	53.3	88%
848	Tulip Poplar	<i>Liriodendron tulipifera</i>	39.5	59.3	94%
863	Tulip Poplar	<i>Liriodendron tulipifera</i>	39.0	58.5	88%
864	Tulip Poplar	<i>Liriodendron tulipifera</i>	34.0	51.0	100%
12	Chestnut Oak	<i>Quercus prinus</i>	35.0	52.5	75%
865	Tulip Poplar	<i>Liriodendron tulipifera</i>	35.7	53.6	94%
890	Southern Red Oak	<i>Quercus falcata</i>	33.0	49.5	94%
922	Northern Red Oak	<i>Quercus rubra</i>	35.0	52.5	88%
923	Northern Red Oak	<i>Quercus rubra</i>	32.0	48.0	97%
924	Northern Red Oak	<i>Quercus rubra</i>	50.4	75.6	63%
925	Southern Red Oak	<i>Quercus rubra</i>	31.0	46.5	81%
926	Northern Red Oak	<i>Quercus rubra</i>	61.0	91.5	84%
927	Tulip Poplar	<i>Liriodendron tulipifera</i>	33.0	49.5	94%
928	White Oak	<i>Quercus alba</i>	34.5	51.8	88%
929	Southern Red Oak	<i>Quercus falcata</i>	36.4	54.6	91%
930	Southern Red Oak	<i>Quercus falcata</i>	47.5	71.3	84%
931	Tulip Poplar	<i>Liriodendron tulipifera</i>	46.0	69.0	91%
932	White Oak	<i>Quercus alba</i>	38.5	57.8	94%
933	Northern Red Oak	<i>Quercus rubra</i>	34.5	51.8	94%
934	White Oak	<i>Quercus alba</i>	31.5	47.3	94%

Forest Conservation Worksheet 2.2

Net Tract Area

Corridor Center City of Laurel

A. Total Tract Area

A = 28.24

B. Deductions

B = 0.00

C. Net Tract Area

C = 28.24

Land Use Category

Input the number "1" under the appropriate land use zoning, and limit to only one entry

ARA 0 MDR 0 IDA 0 HDR 0 MPD 1 CIA 0

D. Afforestation Threshold (Net Tract Area x 15%)

D = 4.24

E. Conservation Threshold (Net Tract Area x 15%)

E = 4.24

Existing Forest Cover

F. Existing Forest Cover within the Net Tract Area

F = 26.65

G. Area of Forest Above Conservation Threshold

G = 22.41

Break Even Point

H. Break Even Point

H = 8.72

I. Forest Clearing Permitted Without Mitigation

I = 17.93

Proposed Forest Clearing

J. Total Area of Forest to be Cleared

J = 23.95

K. Total Area of Forest to be Retained

K = 2.70

Planting Requirements

L. Reforestation for Clearing Above the Conservation Threshold

L = 5.60

M. Reforestation for Clearing Below the Conservation Threshold

M = 3.07

N. Credit for Retention above the Conservation Threshold

N = 0.00

P. Total Reforestation Required

P = 8.68

Q. Total Afforestation Required

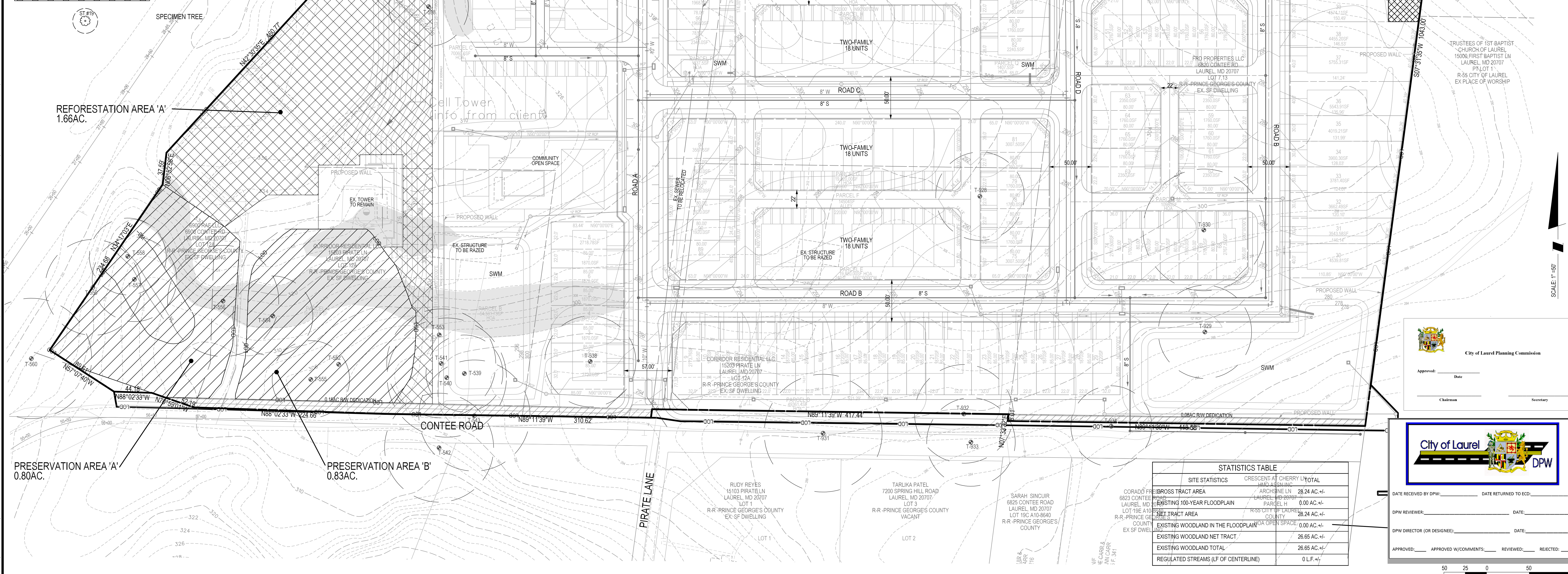
Q = 0.00

R. Total Planting Requirement

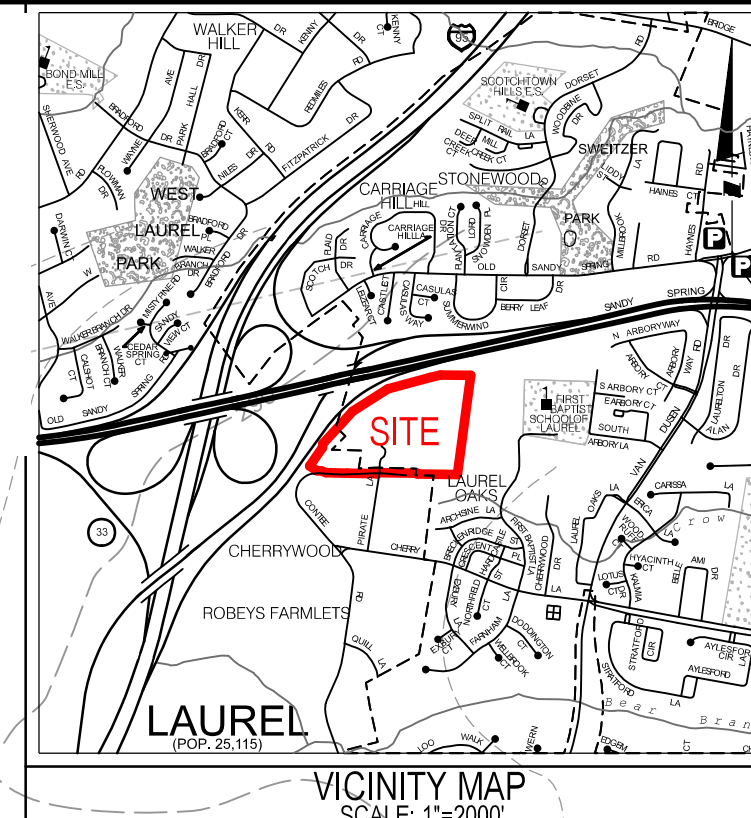
R = 8.68

PRESERVATION AREA	ACRES	REFORESTATION AREA	ACRES	LANDSCAPE/ 20-41.9(a)(1)b.ii	ACRES
A	0.80	A	1.56	A	0.06
B	0.83	B	0.16	B	0.13
C	0.83	C	0.20	C	0.13
D	0.24				
TOTAL	2.70	TOTAL	2.02	TOTAL	0.19

- BOUNDARY
- LOT LINE
- EX. STREAM
- 100 YEAR FLOODPLAIN
- WETLANDS
- WETLAND BUFFER
- INT CONTOUR
- INDEX CONTOUR
- SOIL LINE
- 65 dBA NOISE LINE(UNMITIGATED)
- EX. TREE LINE
- PROPOSED CONTOUR
- UTILITY EASEMENT
- 15-25% SLOPES
- WOODLAND PRESERVATION AREA
- WOODLAND PRESERVED-NOT CREDITED
- SPECIMEN TREE



Map Unit	Map Unit Name	Description	K-factor	Hydric Rating	Hydrologic Soil Group	Drainage Class
ApB	Aquasco silt loam	2 to 5 percent slopes	0.49	0	D	Somewhat poorly drained
BaB	Beltsville silt loam	2 to 5 percent slopes	0.37	5	C	Moderately well drained
CaD	Chillum silt loam	10 to 15 percent slopes	0.32	0	C	Well drained
MpB	Matapeake silt loam	2 to 5 percent slopes	0.49	0	C	Well drained
ZS	Zekiah and issue soils	Frequently flooded	0.32	61	B/D	Poorly drained



SOLTESZ, LLC
4300 Forbes Boulevard, Suite 230
Lanham, MD 20706
P. 301.794.7555 F. 301.794.7656
www.solteszco.com

Engineering
Surveying
Planning
Environmental Sciences

NO. REVISIONS BY DATE

MISS UTILITY NOTE
INFORMATION CONCERNING EXISTING UNDERGROUND UTILITIES WAS OBTAINED FROM AVAILABLE RECORDS. THE CONTRACTOR MUST DETERMINE THE EXACT LOCATION AND ELEVATION OF ALL EXISTING UTILITIES AND UTILITY CROSSINGS BY OBTAINING TEST PITS BY HAND, WELL IN ADVANCE OF THE START OF EXCAVATION. CONTACT THE UTILITY AT 1-800-325-3771 48 HOURS PRIOR TO THE START OF EXCAVATION. IF CLEARANCES ARE LESS THAN SHOWN ON THIS PLAN OR TWELVE (12) INCHES, WHOEVER IS LESS, CONTACT THE ENGINEER AND THE UTILITY COMPANY BEFORE PROCEEDING WITH CONSTRUCTION. CLEARANCES LESS THAN NOTED MAY REQUIRE REVISIONS TO THIS PLAN.

OWNER / DEVELOPER / APPLICANT
PULTE GROUP
5302 LEE HIGHWAY
SUITE 1000
FAIRFAX, VA 22031
703-272-1840
DAVID DeMARCO

PRELIMINARY FOREST CONSERVATION PLAN

CORRIDOR CENTER
LAUREL, MD

LAUREL (10TH) ELECTION DISTRICT, PRINCE GEORGES COUNTY, MARYLAND

City of Laurel Planning Commission

Approved: _____ Date: _____

Chairman: _____ Secretary: _____



DATE RECEIVED BY DPW: _____ DATE RETURNED TO EDC: _____

DPW REVIEWER: _____ DATE: _____

DPW DIRECTOR (OR DESIGNEE): _____ DATE: _____

APPROVED: _____ APPROVED W/COMMENTS: _____ REVIEWED: _____ REJECTED: _____

STATISTICS TABLE	
SITE STATISTICS	CRESIDENTIAL CHERRY HILL TOTAL
CORRIDOR CENTER TRACT AREA	28.24 AC +/-
ARCHSTONE LN	0.00 AC +/-
EXISTING 100-YEAR FLOODPLAIN	0.00 AC +/-
NET TRACT AREA	28.24 AC +/-
EXISTING WOODLAND IN THE FLOODPLAIN	0.00 AC +/-
EXISTING WOODLAND NET TRACT	26.65 AC +/-
EXISTING WOODLAND TOTAL	26.65 AC +/-
REGULATED STREAMS (LF OF CENTERLINE)	0 LF +/-

TAX MAP 5.E2 ZONING CATEGORY: M-X-T

WSOC 200 SHEET 2196060 2206060 2206060

SITE DATUM: NAD 83

HORIZONTAL: NAD 83

VERTICAL: NAVD 83

DATE: 7/19/2024

DESIGNED: D/B

CHECKED: D/B

CAO STPS: V8 / NCS

PROJECT NO. 0008-82-01

